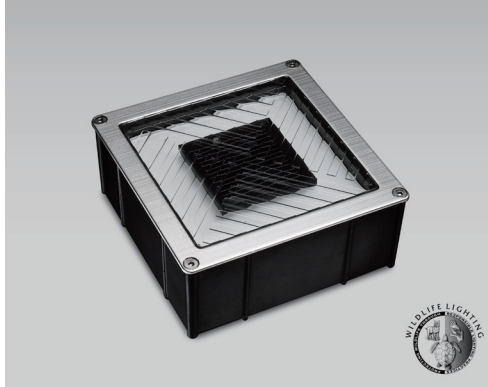
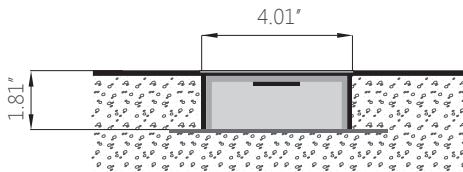


Specification

Page 1 of 1
20140618



METEOR Solar LED Paver lights incorporate state-of-the-art technology, combining the best solar panels, power storage and optical design to create products that will function for years to come.



SH-130 Solar LED Paver Light

Water Proof / No Wiring

Type : _____
 Project : _____
 Quantity: _____
 Note : _____

General

Weight: 0.968 lbs
Rim Finish: Brushed/Polished stainless steel; Optional: SUS316 stainless steel / Brass
Lens: GE super light permeable PC
Housing: SUS304 stainless steel, cast aluminum
Power Storage: Ultracapacitor

Operational

Operation Time: Minimum 12 hours (fully charged) 4-8 hours (overcast)
Full Charge Time: 6 hours (direct sunlight)
Switch: Light sensitive auto on/off

Environmental

Compressive Strength: 9902 lbs/4456 kgs (maximum)
Operating Temperature: -4° F -140° F
Storage Temperature: -13° F -176° F

Warranty

3 year limited warranty. See www.meteor-lighting.com for details.



Ordering Logic:

Ex.SH130C-W-B-H

| Model | LED Color* | Rim Finish | Housing |
|---|---|--|---|
| SH130C (Product) SH130B (Battery sample) | A (Amber) B (Blue) G (Green) R (Red) W (White) WW (Warm white) | B (Brushed Stainless Steel) P (Polished Stainless Steel) B316 (SUS316 Stainless Steel) BR (Brass) | H (Housing and Anchor Plate Included) - (Without Housing and Anchor Plate) |

| *Color | LUX (Average) |
|------------|---------------|
| White | 30 |
| Amber | 25 |
| Red | 70 |
| Blue | 25 |
| Green | 60 |
| Warm White | 28 |

